



The University of Tennessee Institute for Public Service

*Connecting people and solutions to improve the
efficiency & performance of government &
business and increase the prosperity and
competitiveness of Tennessee*

Herb Byrd, III

**The
Land-Grant System**

Research

Teaching

Outreach

**Hatch Act
1887**

**Smith-Lever Act
1914**

**Morrill Acts
1862 1890**

Why We Exist

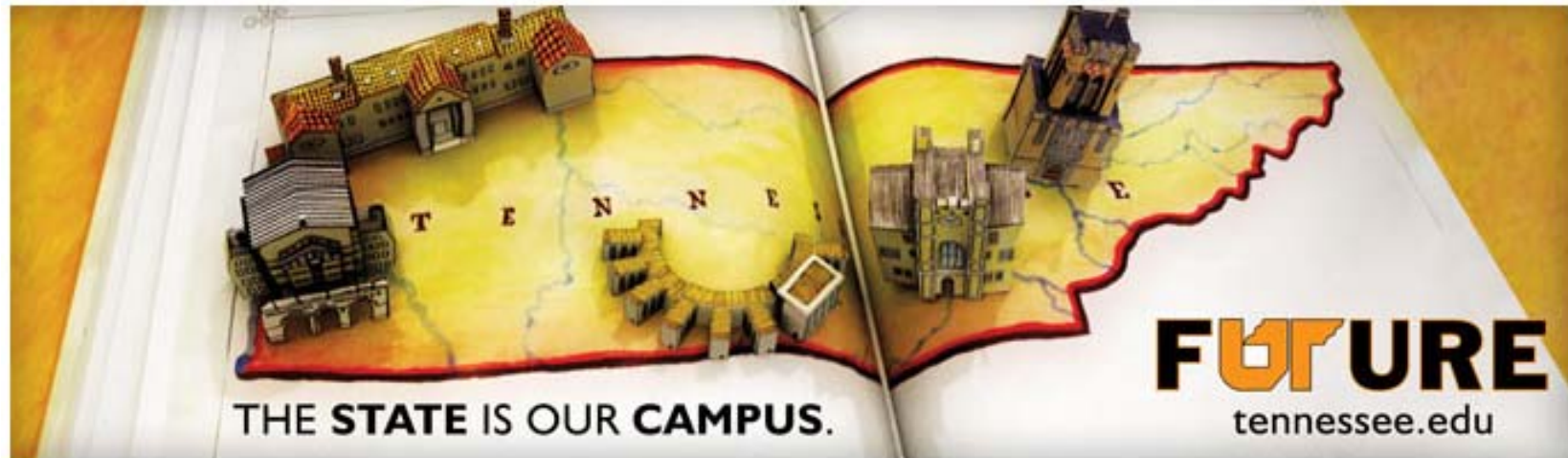
The University of Tennessee is

- a land-grant university
- charged with teaching, research and *service*

We fulfill the *service* mission for

- Local governments
- Industry
- State government

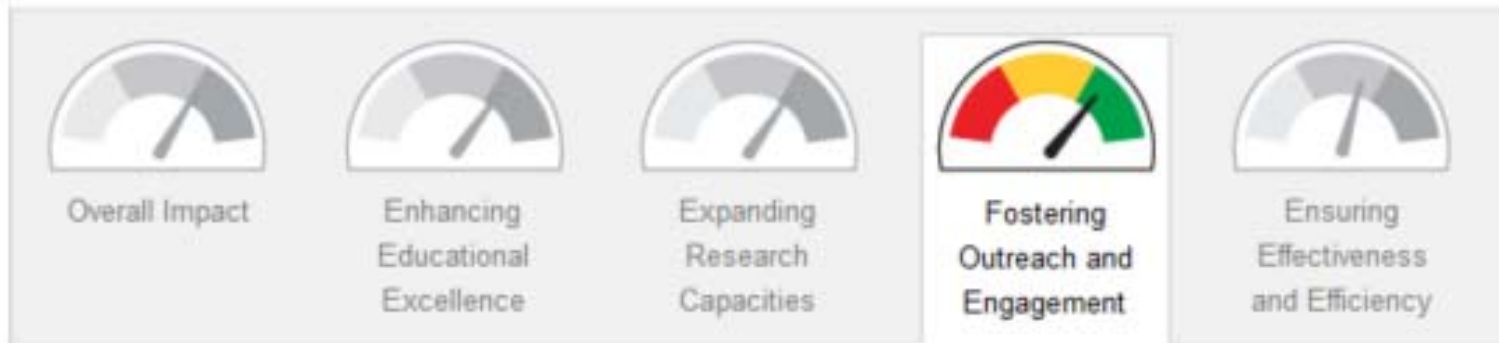
The University of Tennessee



UT System Organization Chart



IPS & UT Strategic Plan



Goal 3: Fostering Outreach and Engagement

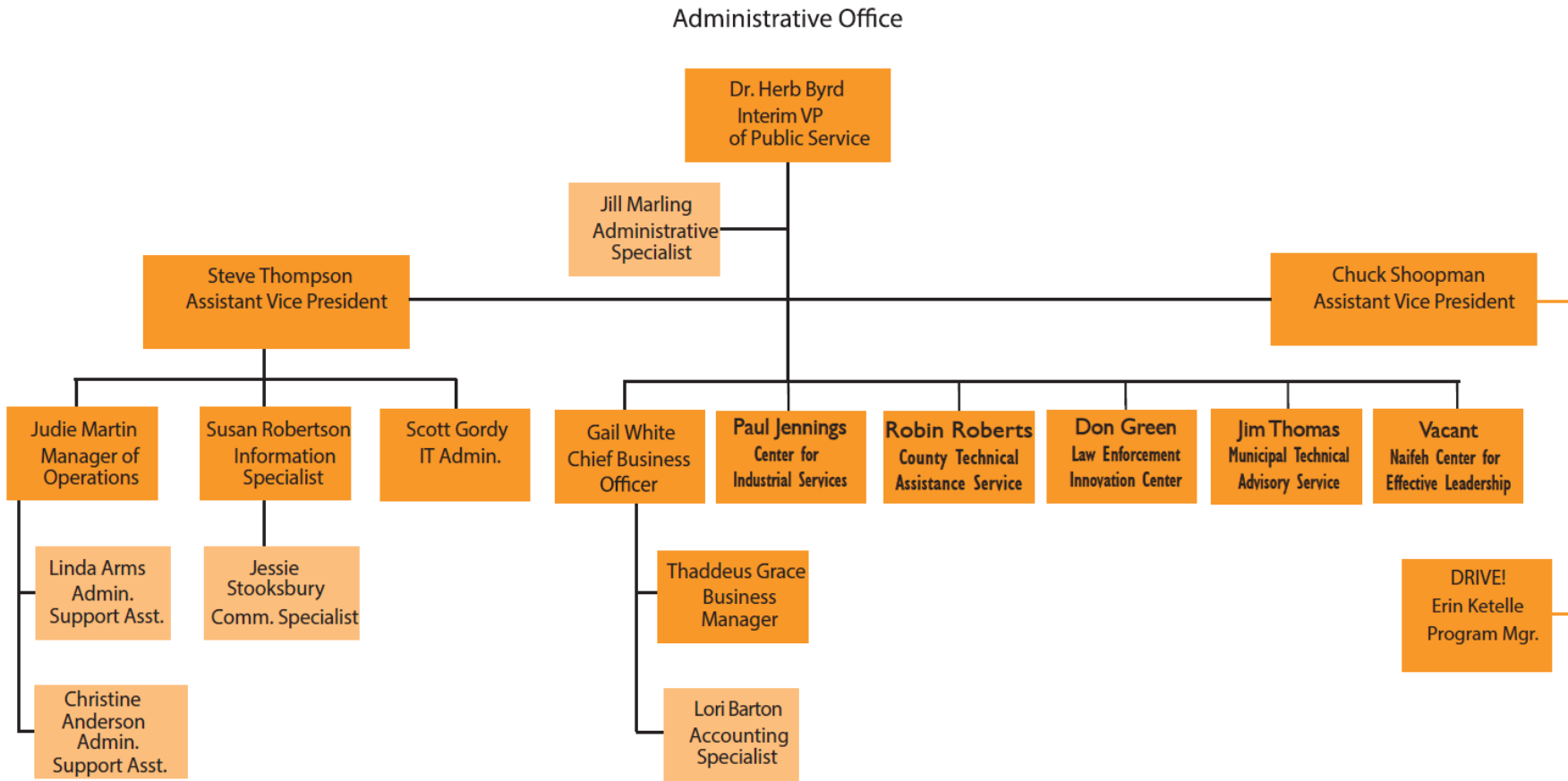
Engage members of the UT System community in outreach, engagement and service to improve communities and the quality of life of residents in Tennessee, with emphasis on economic development.



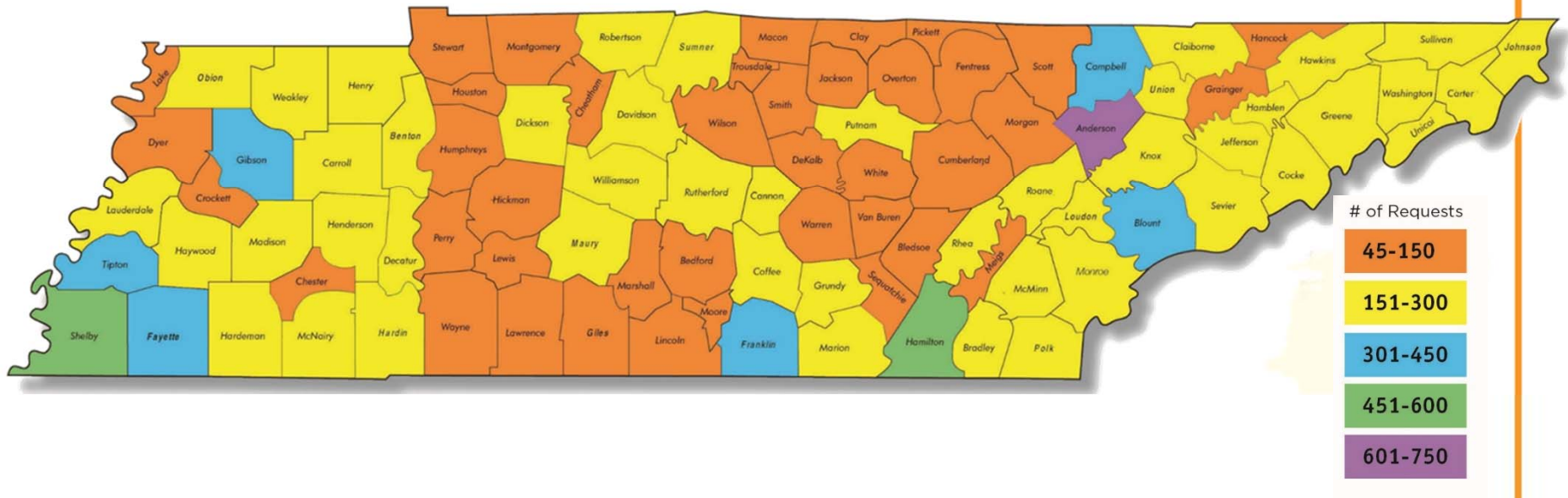
Institute for Public Service



IPS Organization Chart



FY2014 Requests for Assistance



Municipal Technical Assistance Service (MTAS)

Established in 1949 TCA 49-9-407



Center for Industrial Services (CIS)

Established in 1963 TCA 49-9-403



County Technical Assistance Service (CTAS)

Established in 1973 TCA 49-9-402



Law Enforcement Innovation Center (LEIC)

Established in 1997 TCA 49-9-408



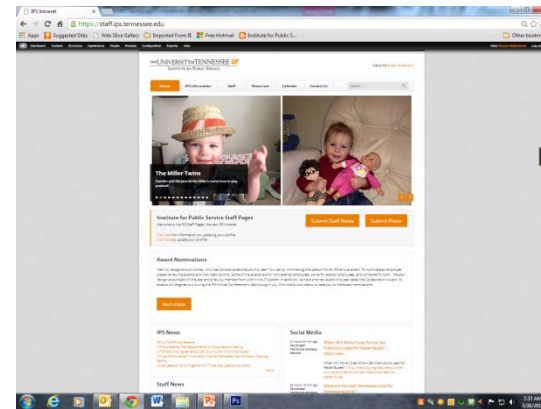
Naifeh Center for Effective Leadership

Established in 2008 TCA 49-9-409



Delivery Methods

- One-on-one and small group consulting
- Training classes (in person and online)
- Group facilitation
- Information Resources
 - Web sites
 - Publications
(printed and electronic)
 - Customer and program alumni networks

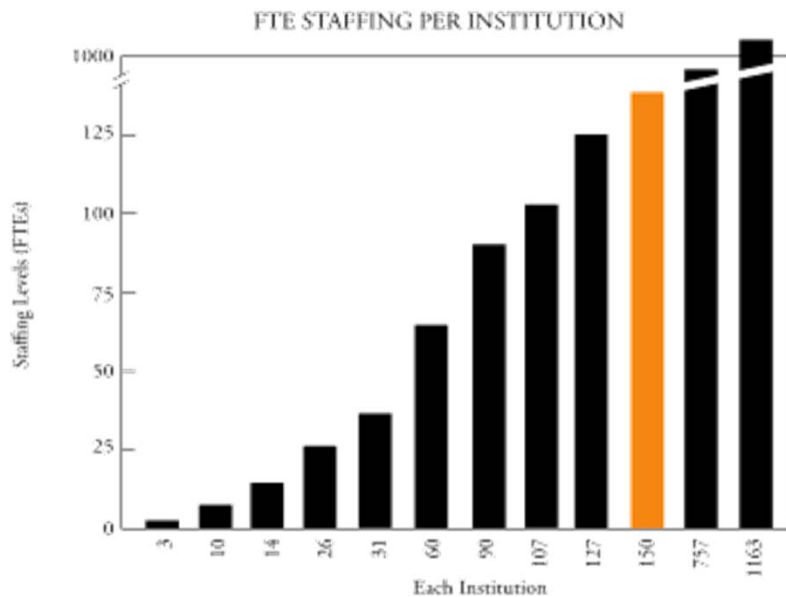


IPS Office Locations

- West – Jackson, Martin and Memphis
- Middle – Nashville, Cookeville and Murfreesboro
- East – Chattanooga, Knoxville, Johnson City and Oak Ridge
- Statewide – Individuals working from home



Overall Staffing Levels



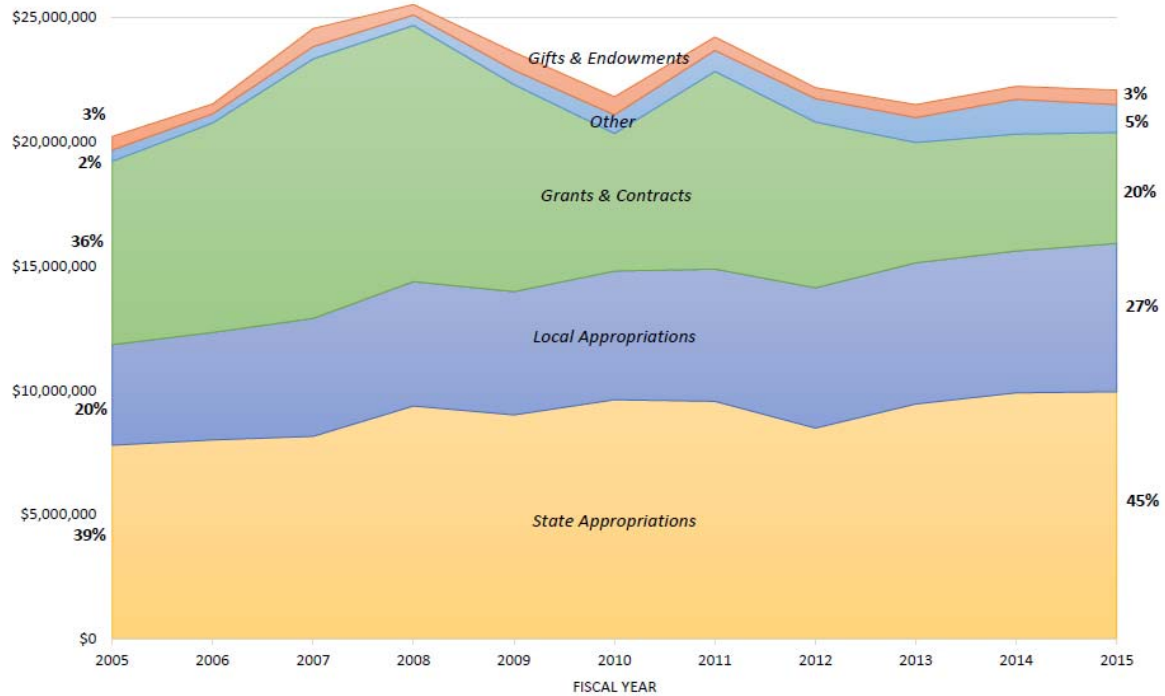
- FTE range mostly 50-125
- Many reductions around 2008 due to recession
- Mostly staff, some faculty
- Some faculty with tenure track
- Often tied to academic unit
- Funding sources mostly
 - State / university appropriations
 - Fee for service
 - Grants and contracts

FY 2016 Budget

\$24M

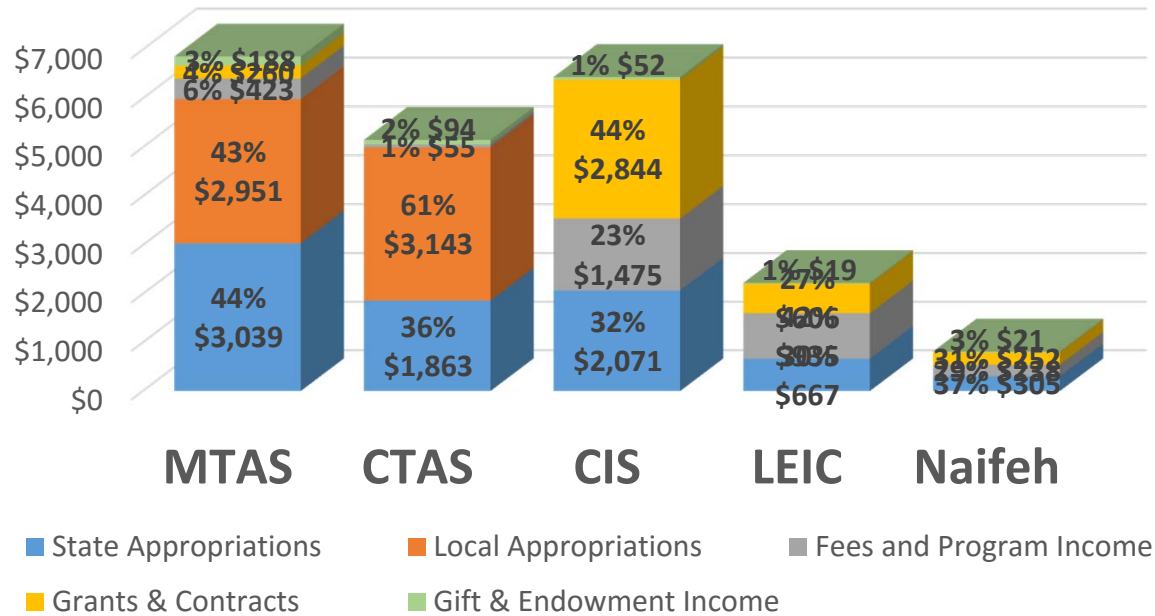
- Three line-items in the state budget
- Unique funding history with local governments
- Highly leveraged as matching funds for state and federal grants and contracts
- Independent F&A rates

IPS Revenues



Sources of Funding by IPS Agency

in thousands of dollars



FY2015 Impact

Connecting people and solutions to improve efficiency and performance of government and businesses, and increase the prosperity and competitiveness of Tennessee.

28,336
Requests



\$817.2
Million



14,886
Participant



16,344
Jobs



279,494
Contacts

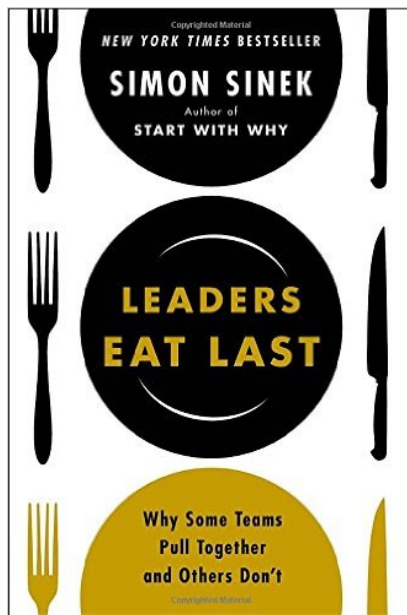


Program challenges & opportunities

- State budget limitations
- Competition for clients
- Recruiting and retaining talented, committed staff
- Streamlined structure
- Collaborative culture
- New markets (global, community policing / homeland security, workforce development)
- Increasing educational services, classroom and online
- Developing better metrics
- Leveraging technology




LEAD!



“Leadership, true leadership, is not the bastion of those who sit at the top. It is the responsibility of anyone who belongs to the group. Though those with formal rank may have authority to work at greater scale, each of us has a responsibility to keep the Circle of Safety strong. We must all start today to do little things for the good of others...one day at a time.

Let us all be the leaders we wish we had.”

Sinek, S. (2014). *Leaders Eat Last: Why some teams pull together and others don't*. New York: Penguin, p. 216.

A blurred landscape photograph showing a dirt path leading through a field. On the right side, there is a fence made of wooden posts and wire. The background consists of rolling hills or mountains under a hazy sky. The overall image has a soft, out-of-focus quality.

The future is not some place we are going, but one we are creating. The paths are not found but made, and the activity of making them changes both the maker and destination.

- *John Scharr*

